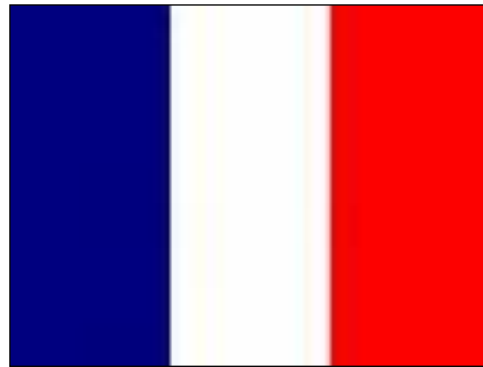




La Grande Découverte

(The Great Discovery)



Parents' Briefing May 2023

Which trip is my child going on?

TRIP 1 – 8Q 8S 8W 8X

26th - 28th June

TRIP 2 – 8R 8T 8U 8V 8Y

28th -30th June



Example itinerary – Day 1

- Treasure hunt and souvenir shopping in Boulogne's historic Old Town
- Packed lunch in the park
- Visit to Nausica Aquarium
- Check in to hotel and dinner
- Team building activities and a little free recreation time!



Example Itinerary – Day 2

- Picnic challenge in Etaples/Le Touquet
- Picnic
- Visit WW1 cemetery in Etaples
- Visit the Musée de l'Abeille
- Dinner.



Example itinerary – Day 3

- Visit Boulangerie
“Le Fournil”/ chocolaterie
- Visit to Snail Farm to see how this French delicacy is farmed with tastings for the brave!
- Picnic lunch (provided by hotel)



Essential Timings

- Coaches will leave and arrive back at **Imberhorne Lane (Upper School)**
- **Trip 1** Students need to arrive at school at **4.30am** Coaches will leave at 5.00am
- **Trip 2** Students need to arrive at school at **4.30am** Coaches will leave at 5.00am
- Coaches will leave promptly and we cannot wait for latecomers!
- **Trip 1** will arrive back at approx **6.00pm**
- **Trip 2** will arrive back at approx **5.00-6.00pm**
- Keep an eye on our Facebook page (no account necessary). We will update if there are any significant delays



The Hotel- *Hôtel du Moulin aux Draps*



The Hotel

- Most rooms are ensuite and have a variety of 4, 5 or 6 beds.
- We will try to ensure that they share a room with their friends.
- Breakfasts and evening meals will be eaten in the hotel restaurants
- Facilities include open space for the students to play..



What to pack in your LGD day bag

- A bottle of water that can be refilled
- Packed lunch (Day 1)
- Sunscreen (high factor)
- Light waterproof jacket
- Pen and pencil
- Camera
- Spending money for the first day (must be in euros!)
- **Students must wear a watch!**

On the coach we will hand out:

- Grande Découverte activity booklets



Please do not pack the following:

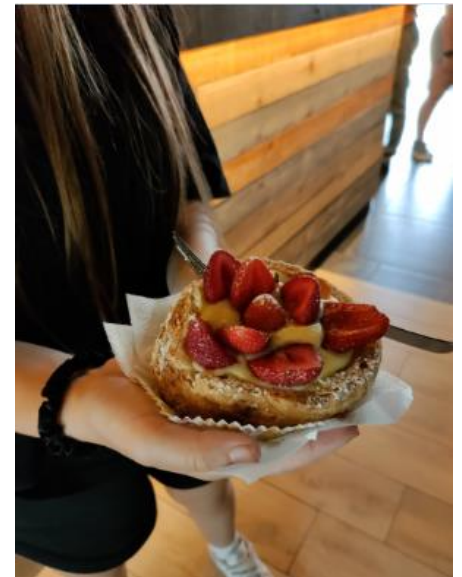
- Unchanged currency - there will be no opportunity to change £££ to Euros while on the trip
- **Mobile phones**
- Other personal electronic devices
- **ABSOLUTELY NO NUTS**
- **Please pack fruit and veg in separate bag (only to be consumed outside).**
- Sweets
- Juice or fizzy drinks
- Aerosol deodorants – roll-on deodorants are fine but sprays can trigger asthma attacks in some students and are unsafe in high temperatures



What to pack in your suitcase

- Clothing that is suitable for varied weather
- Hoodie or jumper
- **Towel** and shower gel / soap
- Toothbrush, toothpaste etc.
- The rest of your child's spending money, divided into envelopes for Day 2 and Day 3 (must be in euros!)
- Some healthy snacks e.g. cereal bars, dried fruit (no nuts!!)

Please also ensure that your child is wearing comfortable, practical footwear as the trip is very active!



Pocket Money

- Spending money for the first day packed in day bag (must be in euros!)
- The rest of your child's spending money, should be packed in your child's suitcase and divided into envelopes for Day 2 and Day 3 (must be in euros!)
- There are limited opportunities for your child to spend money so we suggest a maximum of 30 Euros.

Medication and dietary requirements

- The medical form must be up to date so if anything changes between now and the trip, please contact us!
- Medication should be in a bag, and all items must be clearly labelled with your child's name
- All medication (even if non-prescription) must be handed to a member of staff when loading the coach
- All dietary requirements must be stated on the medical form
- If your child is vegetarian or vegan, please state this clearly on the medical form and make clear whether or not they eat fish / dairy
- The more information we have, the better!



Learning and Behaviour

- Curriculum links and the activity booklet
- Shopping in the Old Town
- Behaviour expectations
- Rules for night time



Photos and updates

- Photographs will be posted on the school Facebook account **AFTER** both trips have returned home.
- This is because many activities are in a semi-rural location and we do not have WIFI access.
- Please keep an eye on Facebook, twitter or the school website for updates to return times for each trip.



Merci beaucoup!

